



KAWASAKI ZX-10R (2008)

(2008)

SLIP-ON EXHAUST SYSTEM

SLIP-ON + OPTIONAL LINK PIPE EXHAUST SYSTEM

www.akrapovic.net

The dynamic superbike offers a great tuning platform for motorcyclists who desire something special. Our sporty and lightweight SLIP-ON systems offer a great balance between price and performance and represent the first step in the exhaust system tuning process.

The muffler outer sleeve is made of titanium or carbon-fiber, which gives a special hi-tech touch to our SLIP-ON system. System is not homologated and is developed only for race track use.

PERFORMANCE

Measurements of the Akrapovic SLIP-ON OPEN system on the Kawasaki ZX 10R (without noise damper):

The Akrapovic SLIP-ON system will deliver a big power and torque increase from a simple modification. Power output is smoother over the entire rpm range. We measured a max. power of 170.8 HP at 12300 rpm on back wheel and max. power increase of 9.5 HP at 12350 rpm. The torque is increased over the entire rpm range, which is exceptionally useful for more comfortable and smooth riding. With our SLIP-ON systems you will also save 2 kg in comparison with the stock muffler.

CONFIGURATION

The SLIP-ON SERIES exhaust system has a 1-1 configuration and is composed of two main parts: a cylindrical stainless steel link pipe and a muffler which is available in carbon-fiber or titanium outer sleeve. The muffler interior is made entirely of titanium. The link pipe is attached to the header assembly with a graphite gasket, secured with a metal clamp and silicone shielded spring. The link pipe and muffler are welded together.

	PERFORMANCE		
	stock	AKRAPOVIC	max. increased power
max. rear wheel power HP / rpm (measured on Dynojet ATV)	163.1 / 12150	170.8 / 12300	9.5 / 12350

	CONFIGURATION		
	header tubes	collector	link pipe
material	-	-	TITANIUM
tube shape	-	-	CYLINDRICAL

interference crossover tubes	-	lambda sensor	-
header tube inner sleeves	-	header tube flanges	-
header tubes - collector connection	-	collector / header tube - link pipe connection	GRAPHITE GASKET(STOCK)+ METAL CLAMP+ SILICON SHIELDED SPRING
link pipe - muffler connection	WELDED	muffler inlet cap /outlet cap	Ti / Ti
muffler metal interior	TITANIUM	muffler outer sleeve	Ti or Carb.fiber / Ti or Carb.fiber
muffler clamp	CARBON-FIBER	muffler bracket	-
muffler insert	EU	NOISE DAMPER	-
	US	-	catalytic converter

	ADDITIONAL DATA				
	stock	AKRAPOVIC		difference	
		S.S. link pipe	TITANIUM link pipe	stock - S.S.	stock - titanium
weight comparison (kg)	3.72	-	1.72	0.00	2

noise measurements (dB / rpm)	stock	AKRAPOVIC
	94 / 5850	102 / 5850
possibility of periodic service without removing A.E.S.	oil	oil filter
	YES	YES
legal for street use	NO	

Technical specifications of Akrapovic exhaust systems and related products subject to change without notice.







The dynamic superbike offers a great tuning platform for motorcyclists who desire something special. Our sporty and lightweight SLIP-ON systems offer a great balance between price and performance and represent the first step in the exhaust system tuning process. Optional link pipe adds even more power and torque, so riding can be smoother.

The muffler outer sleeve is made of titanium or carbon-fiber, which gives a special hi-tech touch to our SLIP-ON system. System is not homologated and is developed only for race track use.

PERFORMANCE

Measurements of the Akrapovic SLIP-ON OPEN +optional link pipe system on the Kawasaki ZX 10R (without noise damper):

Power & Torque: The Akrapovic SLIP-ON system will deliver a big power and torque increase from a simple modification. Power output is smoother over the entire rpm range. We measured a max. power of 171.6 HP at 12350 rpm on back wheel and max. power increase of 10.3 HP at 12400 rpm. The torque is increased over the entire rpm range, which is exceptionally useful for more comfortable and smooth riding. With our SLIP-ON systems you will also save 3.48 kg in comparison with the stock muffler.

CONFIGURATION

The SLIP-ON SERIES exhaust system has a 1-1 configuration and is composed of two main parts: a cylindrical stainless steel link pipe and a muffler which is available in carbon-fiber or titanium outer sleeve. The muffler interior is made entirely of titanium. The link pipe is attached to the header assembly with a graphite gasket, secured with a metal clamp and silicone shielded spring. The link pipe and muffler are welded together.

Technical specifications of Akrapovic exhaust systems and related products subject to change without notice.

	PERFORMANCE		
	stock	AKRAPOVIC	max. increased power
max. rear wheel power HP / rpm (measured on Dynojet ATV)	163.1 / 12150	171.6 / 12350	10.3 / 12400

	CONFIGURATION		
	header tubes	Optional link pipe	link pipe
material	-	S.S.	TITANIUM
tube shape	-	CONICAL	CYLINDRICAL

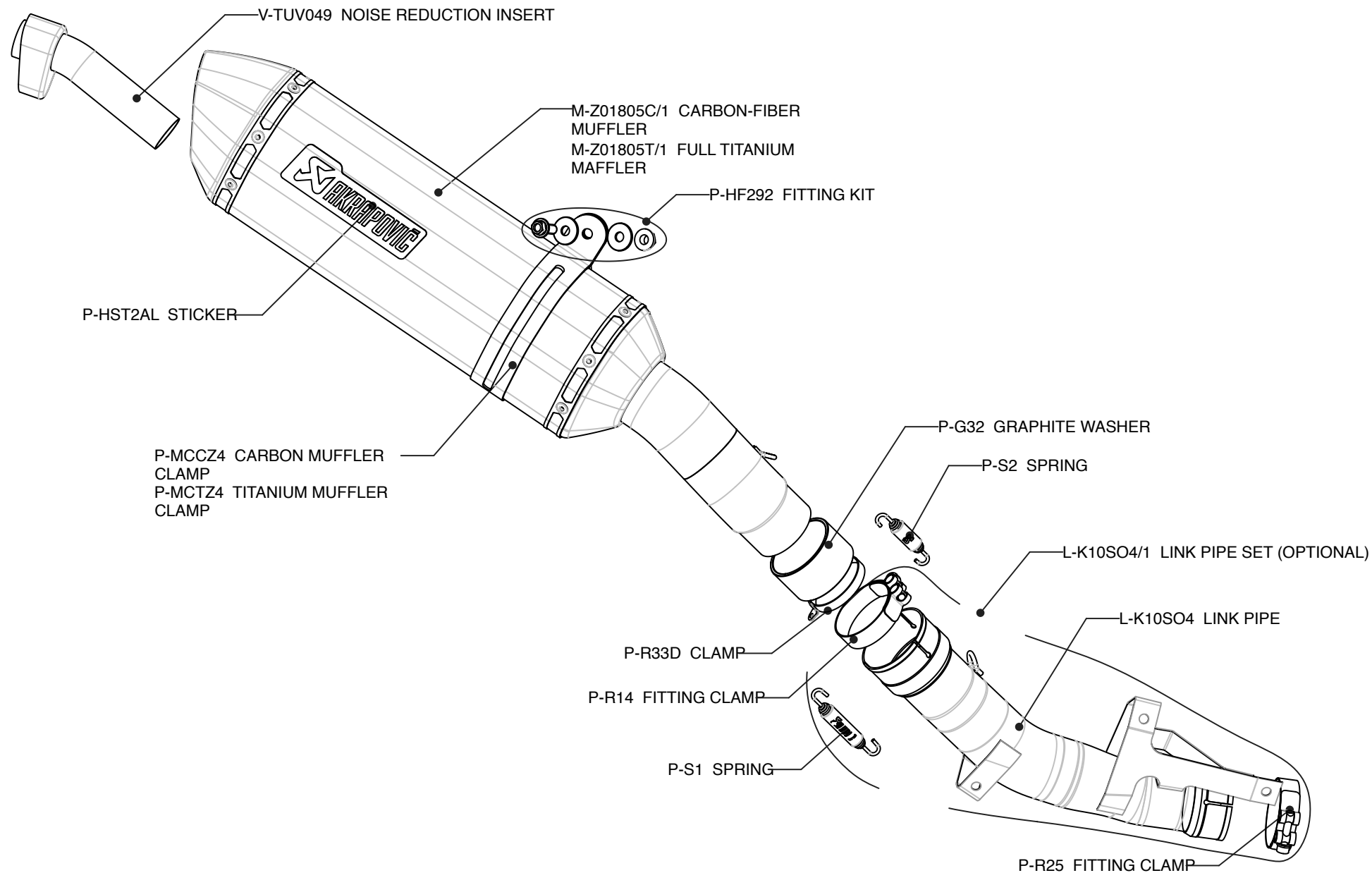
interference crossover tubes	-	lambda sensor	-	
header tube inner sleeves	-	header tube flanges	-	
collector – optional LP connection	Metal clamp	collector / header tube - link pipe connection	GRAPHITE GASKET+ METAL CLAMP+ SILICON SHIELDED SPRING	
link pipe - muffler connection	WELDED	muffler inlet cap /outlet cap	Ti / Ti	
muffler metal interior	Ti	muffler outer sleeve	Ti or Carb.fiber / Ti or Carb.fiber	
muffler clamp	CARBON-FIBER	muffler bracket	-	
muffler insert	EU	-	heat shield	-
	US	-	catalytic converter	-

	ADDITIONAL DATA				
	stock	AKRAPOVIC		difference	
		S.S. link pipe	TITANIUM link pipe	stock - S.S.	stock - titanium
weight comparison (kg)	5.93	2.45	-	3.48	-

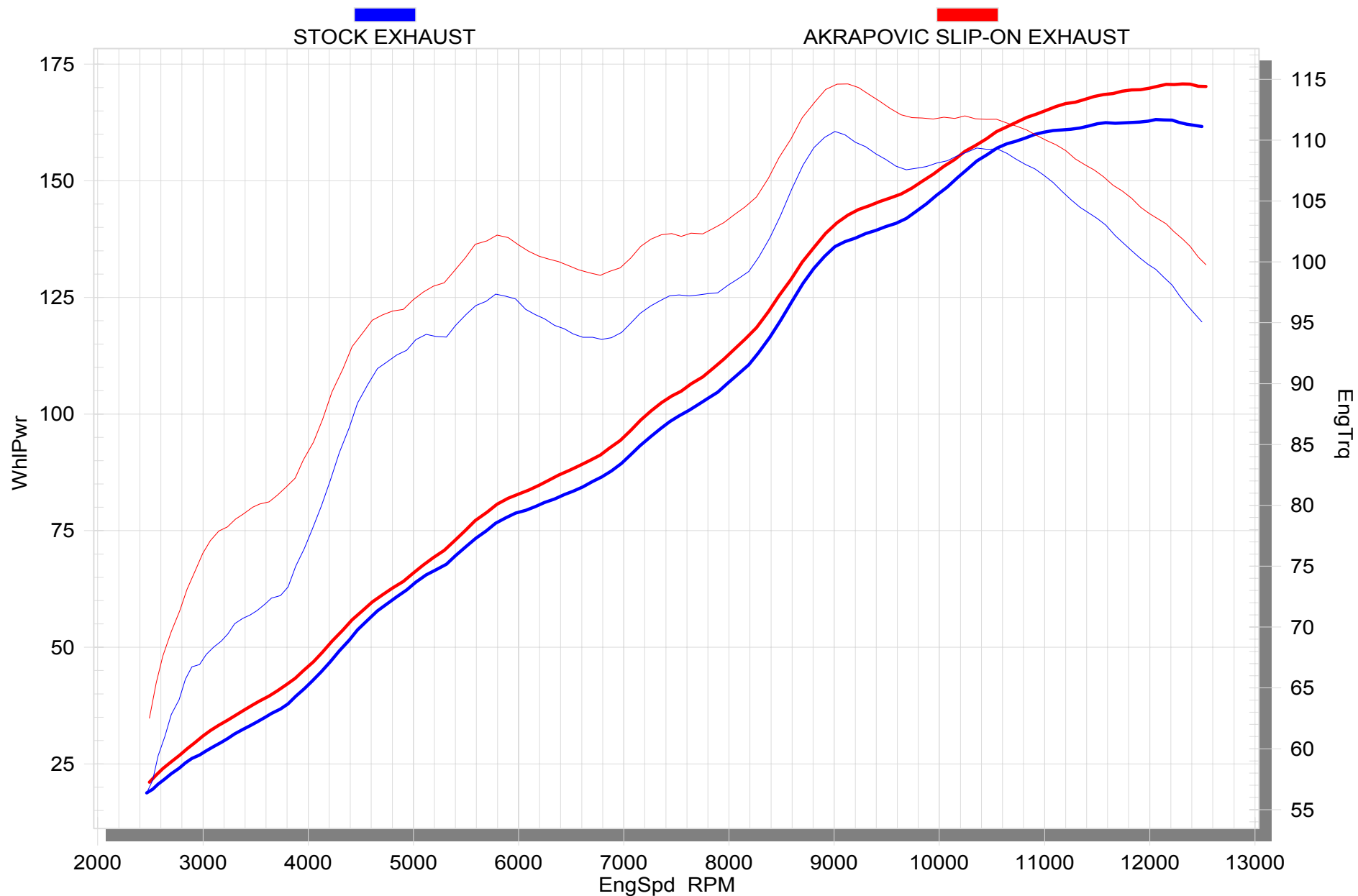
noise measurements (dB / rpm)	stock	AKRAPOVIC
	94 / 5850	102 / 5850
possibility of periodic service without removing A.E.S.	oil	oil filter
	YES	YES
legal for street use	NO	







Product code: (108685) S-K10SO4-ZC, (108686) S-K10SO4-ZT slip-on
S-K10SO4-ZC + L-K10SO4, S-K10SO4-ZT + L-K10SO4 slip-on + optional link pipe



Product code: (108685) S-K10SO4-ZC, (108686) S-K10SO4-ZT slip-on



